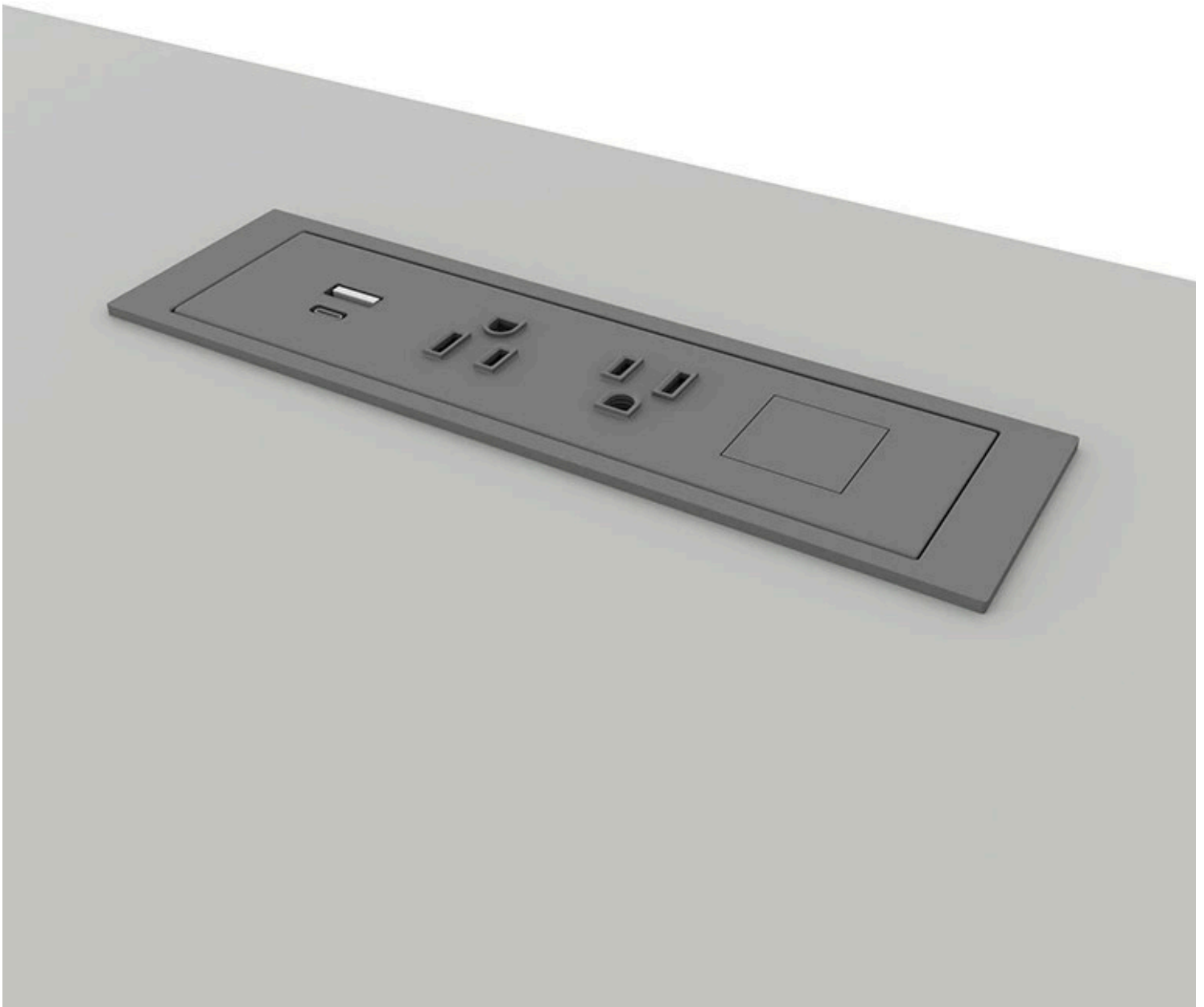




# In-Surface Power Modules



Designed for sleek, clutter-free workspaces these in-surface power modules integrate directly into desks and tables.

# Key Features

## A Nacre Pop-Up

Push-to-open feature pops up the module for easy access to power.  
Two receptacles for three-prong plugs.  
USB-A and USB-C charging ports conveniently charge devices.  
Available with single-circuit Pattern plug as well as three-prong corded power.

## B Dean In-Surface

Two receptacles for three-prong plugs.  
USB-A and USB-C charging ports conveniently charge devices.  
Available with single-circuit Pattern plug as well as three-prong corded power.

## C Node In-Surface

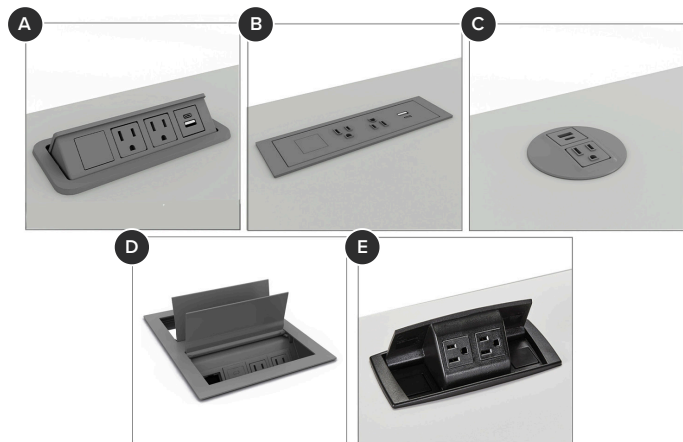
One receptacle for three-prong plugs.  
USB-A and USB-C charging ports conveniently charge devices.  
Round shape allows for easy field installation.  
Available with single-circuit Pattern plug as well as three-prong corded power.

## D Double Ellora B

Easy access to both sides of table with soft closing lid while allowing for cords to route through when closed.  
Four total receptacles for three-prong plugs, two per side.  
Two USB-A and two USB-C charging ports conveniently charge devices.  
Two open data ports include data tree covers for flexibility.  
Available with single-circuit Pattern plug as well as three-prong corded power.

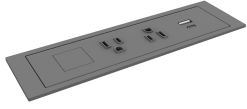
## E Power-Up

Mounts onto a variety of training tables, worksurfaces and desking systems.  
Two data ports and two power outlets.  
Modules plug directly into standard outlet or can be specified with Activ8 cord when powering multiple workstations.



# Styles

---



Dean In-Surface  
W8.12" D2.3" H2.5"



Double Ellora B  
W10.19" D8.31" H2.71"



Nacre Pop-Up  
W7.25" D3.3" H2.92"



Node In-Surface  
Dia.3.38" H3.3"



PowerUp  
W7.18" D3" H2.92"

# Document Links

---

[Pricing →](#)

[Material Approvals →](#)

[Documents →](#)

---

WARRANTY

**15 Years**